

# GOLF guide

## GREATER palm springs

There are more than 2,000 scenic golf holes and 100-plus courses to experience in the nine cities of Greater Palm Springs, California.

These legendary courses have been masterfully designed by some of the world's most famous golf architects and pros, including Pete Dye, Nick Faldo, Jack Nicklaus and Arnold Palmer.

Greater Palm Springs is steeped in golf tradition and some of the most challenging play found anywhere in the world. Pick a course!  
It's bound to be truly memorable.





Map Location	Page #	Map Location	Page #
 <b>Indian Wells Golf Resort</b> (760) 346-4653	10	 <b>Cimarrón Golf Resort</b> (800) 701-1656	18
 <b>La Quinta Resort &amp; Club</b> (800) 598-3828	12	 <b>Desert Willow Golf Resort</b> (760) 346-7060	19
 <b>PGA WEST</b> (800) 598-3828	12	 <b>Hawk's Landing Golf Club</b> (760) 365-0033	20
 <b>SilverRock Resort</b> (760) 777-8884	14	 <b>Mountain Vista Golf Club</b> (760) 200-2200	21
 <b>The Golf Club at La Quinta</b> (760) 771-0707	16	 <b>Tahquitz Creek Golf Resort</b> (760) 328-1005	22
		 <b>The Westin Mission Hills Golf Resort &amp; Spa</b> (760) 328-3198	23
		<b>UnderPar.com</b> green fees for less	24



### Additional Courses in the Coachella Valley

#### CATHEDRAL CITY

Cathedral Canyon Golf Club

Date Palm Country Club

Desert Princess Country Club & Resort

#### COACHELLA

Vineyards RV Resort & Golf Course

#### DESERT HOT SPRINGS

Desert Dunes Golf Club

#### INDIO

Eagle Falls Golf Course

Heritage Palms Golf Club

Indian Palms Country Club & Resort

Indian Springs Golf Club

Lights at Indio Golf Course

Shadow Hills Golf Club

The Golf Club at Terra Lago

#### LA QUINTA

Palm Royale Golf Course

#### PALM DESERT

Golf Center at Palm Desert

JW Marriott Desert Springs Resort & Spa

Marriott's Shadow Ridge

Palm Desert Country Club

Palm Desert Resort Country Club

The Oasis Country Club

Woodhaven Country Club

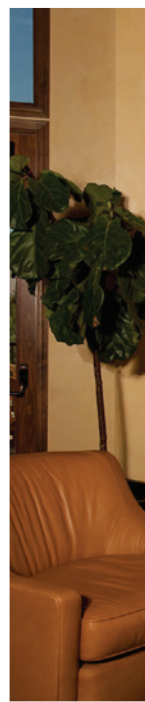
#### PALM SPRINGS

Mesquite Golf & Country Club

#### RANCHO MIRAGE

Omni Rancho Las Palmas Resort & Spa









**(760) 601-3600**

Experience world-class golf at this nationally recognized championship golf course. Preview first-class amenities including a full-service golf shop, enjoy the Valley's most innovative cuisine by premier chef, Gerard Brunett, at Bellatrix Restaurant and entertain your guests in style in our private banquet facilities or under the stars by our waterfalls and lakes.

### DRIVING DIRECTIONS

Approximately 15 minutes east of Palm Springs off I-10 and Cook Street. Exit Cook Street off I-10 from the east or west and Classic Club is on the north side of I-10 at Varner Road. Enter at Classic Club Boulevard.

### GOLF COURSE

Experience what *Golf Digest* and *Golfweek* name as one of the top-rated public courses in the U.S. Enjoy a challenging round of golf on an award-winning Palmer-designed course while taking in the panoramic views of the Santa Rosa, San Jacinto and Chocolate Mountains. Classic Club creates a new spin on desert golf with rolling terrain, 30 acres of water features, 14 bridges, as well as an abundance of pine, olive, and pepperwood trees, with pine-straw ground cover and 5 sets of tees on each hole. Yardage: 7,322. Rating: 75.3. Slope: 142.

### FACILITIES

The Tuscan village-inspired 63,000 sq. ft. clubhouse features a restaurant, bar, grill with outdoor patio seating, locker rooms, and full-service golf shop. Practice facility consists of a magnificent two-sided state-of-the-art teeing ground with putting green, chipping greens and practice bunker.

### RESTAURANT

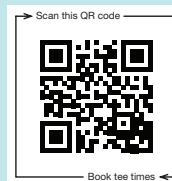
Bellatrix Restaurant offers Mediterranean, Asian & French accents along with traditional steak, seafood fare and an extensive wine list. Bellatrix is open to the public for lunch and dinner. For reservations or more information please call (760) 601-3690.

### GREEN FEES (See Green Fees Legend on Map Page 2)

High Season . . . . .	\$\$\$
Shoulder Season . . . . .	\$\$
Value Season. . . . .	\$

### TEE TIMES

Tee times may be reserved 30 days in advance.  
Contact us at **(760) 601-3600** or **playclassicclub.com**.



Book tee times









**(760) 778-2737**

Blending championship golf with a classic Palm Springs setting, a round at Escena Golf Club is as much about the surroundings as it is about unforgettable golf. The towering San Jacinto mountains and blue skies frame every tee shot. Abundant palm trees, native desert landscaping and dramatic waterscapes add to the sensory feast. Ranked among the Top Ten Public Courses in California by PGATOUR.com, Escena is a must-play for any desert visitor.

### DRIVING DIRECTIONS

**From L.A./Riverside/West:** Take I-10 East to the Gene Autry Trail exit. Go right (south) on Gene Autry Trail, left on Vista Chino, right on Clubhouse View Dr. Follow signs to the golf club.

**From Palm Desert/Indio/East:** Take I-10 West to Date Palm Dr. Go left (south) on Date Palm Dr., right on Vista Chino, left on Clubhouse View Dr. Follow signs to the golf club.

### GOLF COURSE

Escena's expertly crafted **Nicklaus Design** golf course features un-obstructed sightlines and generous driving corridors. Strategic bunkering, waterscapes and undulating greens are there before you, but at the same time there is ample room for you to decide how much you want to take on. Stretching to nearly 7,200 yards, Escena offers a formidable test for the skilled player, but with four sets of tees and room to roam, Escena is enjoyable for anyone.

### FACILITIES

Escena's stunning mid-century-inspired clubhouse is home to the Escena Lounge & Grill, ranked among OpenTable's 2015 Top 100 Al Fresco Dining Restaurants in America. The Grill offers indoor and outdoor seating for breakfast, lunch and dinner. Warm-up range, short-game area and putting greens are complimentary for golfers. Fully stocked pro shop, premium Nike® rental clubs. Groups welcome.

### GREEN FEES (See Green Fees Legend on Map Page 2)

High Season . . . . .	\$\$\$
Shoulder Season . . . . .	\$\$
Value Season. . . . .	\$

### TEE TIMES

Book a tee time on our website

**EscenaGolf.com**

or call the golf shop at **(760) 778-2737**.











**(760) 833-8700**

Voted Best of the Valley 1st place in 2012, 2013, 2014, and 2016 and also 1st place in the Best of the Best in 2014 and 2015. Surrounded on three sides by breathtaking, colorful, natural mountain vistas, sheltered from the wind and nestled at the base of the San Jacinto Mountains lies the Jewel of the Desert, Indian Canyons Golf Resort. This 36-hole resort is uniquely positioned to offer an unrivaled golf experience in the Greater Palm Springs Area.

### DRIVING DIRECTIONS

Located minutes south of downtown Palm Springs.

### GOLF COURSES

**South Course:** Updated in 2004 by Casey O'Callahan with consultant LPGA Hall of Fame inductee Amy Alcott. This 6,582-yard course is one of the most scenic and enjoyable courses in the Coachella Valley. The 18-hole championship course is a par 72 and has five sets of tees for players of all levels. Among its unique features are five par 3's and five par 5's. The South Course also features rolling mounds and fairways with more than 850 mature palm trees.

**North Course:** A championship par 72, 6,943-yard course designed by well-known architect, William P. Bell, the classically designed course meanders through Palm Springs' stylish "Canyon" neighborhood. The course is brought to life by thousands of palm, olive and other desert trees. Located between the 9th and 18th holes is the course's largest water feature, the historic Walt Disney Lotus Fountain, which shoots water more than 100 feet in the air.

### FACILITIES

Indian Canyons Golf Resort is a public facility which features daily breakfast and lunch at our South Course Restaurant and our golf shops carry the latest in apparel. Our clubhouse is large enough to host most events including golf outings, weddings, quinceañeras, and more.

### GREEN FEES (See Green Fees Legend on Map Page 2)

High Season . . . . .	\$\$\$
Shoulder Season . . . . .	\$\$
Value Season. . . . .	\$\$

### TEE TIMES

Reservations can be made by calling the Pro Shop at **(760) 833-8700** or visit us online at: **indiancanyongolf.com**



Book tee times









# INDIAN WELLS GOLF RESORT



**(760) 346-4653**

Just twenty minutes from Palm Springs International Airport, discover Indian Wells Golf Resort, Southern California's premier golf destination. Among its many accolades, the Indian Wells Golf Resort holds the distinction of being the only 36-hole public golf facility in the top 20 of Golfweek's "Best Courses You Can Play" in California.

## DRIVING DIRECTIONS

Travel eastbound on I-10 to the Cook St. exit and turn right on Cook St. and travel southbound to Highway 111. Turn left on Highway 111, then left on Indian Wells Lane.

## GOLF COURSES

Affectionately known as "Beauty" the Celebrity Course is a Picasso among golf courses. The panoramic views of the surrounding Santa Rosa Mountains provide a rugged backdrop to the serene brooks and magnificent waterfalls flowing through beds of wildflowers and annuals that splash throughout this stunning setting.

Opening to rave reviews for its classic American design, the Players Course or the "Beast", pays homage to great designs such as Riviera, Winged Foot and Augusta National. Seven sets of tees were included to make the course fun and playable for all golfers in spite of the course measuring a massive 7,375 yards from the back tees.

Both courses are ranked in the top 25 of "Best Municipal Courses" in the USA by *Golfweek Magazine*.

## FACILITIES

Indian Wells Golf Resort exudes an exclusive atmosphere with genuine hospitality. Featuring a magnificent clubhouse plus award-winning retail and instruction, golfers stay entertained and engaged both off and on the course. Along with our full service Vue Grille and Bar, we feature state of the art banquet and catering facilities. Our Pavilion is the ideal spot for destination weddings and events.

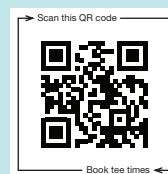
## GREEN FEES (See Green Fees Legend on Map Page 2)

High Season . . . . .	\$\$\$\$
Shoulder Season . . . . .	\$\$\$
Value Season. . . . .	\$\$

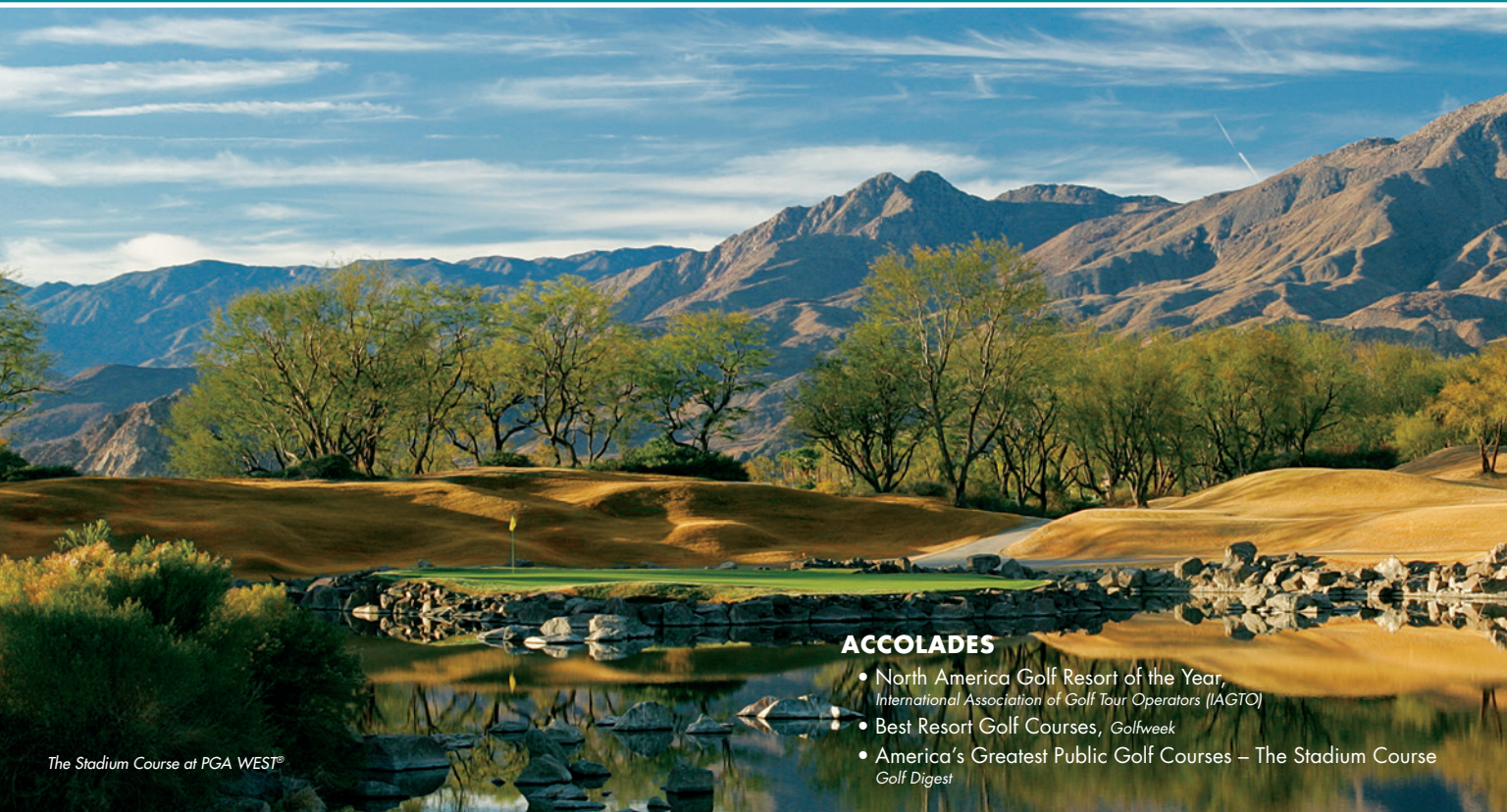
*Green fees include practice facility and golf cart with on-board GPS system.*

## TEE TIMES

For tee times call **(760) 346-4653**. Book online up to 60 days in advance and save!







The Stadium Course at PGA WEST®

#### ACCOLADES

- North America Golf Resort of the Year, *International Association of Golf Tour Operators (IAGTO)*
- Best Resort Golf Courses, *Golfweek*
- America's Greatest Public Golf Courses – The Stadium Course *Golf Digest*



PGA WEST® Nicklaus Tournament Course

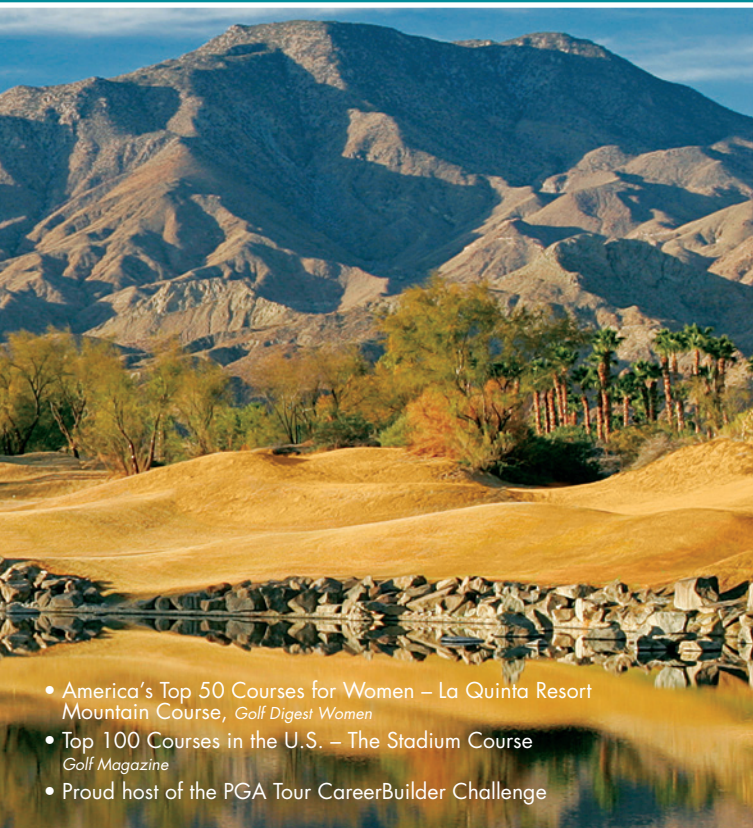


PGA WEST® Greg Norman Course



La Quinta Resort & Club





- America's Top 50 Courses for Women – La Quinta Resort Mountain Course, *Golf Digest Women*
- Top 100 Courses in the U.S. – The Stadium Course, *Golf Magazine*
- Proud host of the PGA Tour CareerBuilder Challenge



Resort Mountain™ Course



La Quinta Resort Dunes™ Course



**La Quinta**  
RESORT & CLUB

A WALDORF ASTORIA RESORT



**(800) 598-3828**

La Quinta Resort & Club features the finest accommodations, dining, tennis and fitness. The home of PGA WEST, this world-renowned golf destination also sports 90 holes of award-winning golf designed by legends Jack Nicklaus, Pete Dye and Greg Norman, as well as instruction at the PGA WEST Golf Academy.



## GOLF ACADEMY

The **PGA WEST Golf Academy** offers the finest in cutting-edge golf instruction, including the following programs: mental and physical well-being, custom club fitting, state-of-the-art video analysis, sophisticated launch monitor systems, and on-course instruction. To book your next lesson or golf school, please call **(760) 564-7144**.

## GOLF COURSES

*\*Course yardages, rating/slope taken from the white tees*

### Dunes Course

6,324 yards

Rating/Slope: 70.8/128

### Mountain Course

6,300 yards

Rating/Slope: 70.9/129

### Greg Norman Course

6,227 yards

Rating/Slope: 70.6/126

### Jack Nicklaus Tournament Course

6,061 yards

Rating/Slope: 70.0/128

### The Stadium Course

6,166 yards

Rating/Slope: 70.4/135

## GREEN FEES

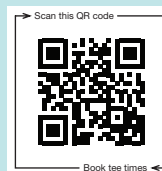
Green fees vary by day; and by season.

*\*All Green Fees include cart, GPS and use of the practice facility. Book directly for best rate guarantee.*

## TEE TIMES

For tee time specials visit **laquintaresort.com/golf** or call **(800) 598-3828**.

**La Quinta Resort Golf Package Specials:** For golf package specials, please visit **laquintaresort.com/specials**.



Scan this QR code

Book tee times









**(760) 777-8884**

The Arnold Palmer Classic Course at SilverRock Resort in La Quinta, California is a former home course of the Bob Hope Classic, 2008-2011. Zagat has recognized SilverRock as one of America's Top Golf Courses. Our staff of PGA professionals takes pride in the level of service we deliver to every player from arrival to departure. SilverRock Resort provides one of the most memorable golfing experiences in La Quinta – or anywhere!

### DRIVING DIRECTIONS

From the I-10 East or from Hwy 111, exit on Washington Street and go south. Stay on Washington Street until it ends, approximately 6 miles and turn left. Go approximately 1/2 mile. The SilverRock entrance is on your right.

### GOLF COURSE

Arnold Palmer clearly wanted a course that would challenge the pros yet be fun and memorable for golfers of all skill levels. At 7,578 yards in length, a rating of 76.3 and a demanding slope of 139, SilverRock is one of the longest courses on the PGA Tour. But with 6 tee boxes to choose from, every golfer will find just the right length and degree of difficulty that fits their game.

### FACILITIES

Our practice facilities are considered to be one of the best in the desert and are a perfect setting for your pre-round warm-up. Need a little help with your swing? Our staff of PGA teaching professionals work with beginners up to tournament-caliber players on a regular basis. Complete golf shop, and full-service restaurant overlooking the course.

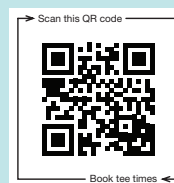
### GREEN FEES (See Green Fees Legend on Map Page 2)

High Season . . . . .	\$\$\$\$
Shoulder Season . . . . .	\$\$\$
Value Season. . . . .	\$\$

*Carts, GPS and range balls included with green fees.*

### TEE TIMES

Tee times may be reserved 30 days in advance. Contact us at **(760) 777-8884** or **silverrock.org**.











# The Golf Club

at La Quinta

**(760) 771-0707**



The Golf Club at La Quinta, located in the Trilogy community, is where your money and enjoyment always out-drive the competition and is perfectly located with a stunning view of the Santa Rosa Mountains.

Play where Tiger and Freddy duelled in the legendary SKINS GAME, where Fred Funk donned his famous pink tutu and Phil and John Daly laced the fairways. The Golf Club at La Quinta has hosted many premiere players like Tiger Woods, Phil Mickelson, Fred Couples, Adam Scott, Annika Sorenstam and Mark O'Meara, who played in the SKINS GAME from 2003 through 2006. Six sets of tee boxes including the famous Skins tees that play at nearly 7,200 yards will give you all the game you have in your bag!

## A COMPLETE GOLF EXPERIENCE

At the Golf Club at La Quinta you enjoy championship golf with a delicious breakfast, lunch or happy hour menu in the grill or on the patio at Bistro 60; all included with your 18-hole greens fee. We have full practice facilities, lessons and carts with GPS. Order food from Bistro 60 directly from your cart! We are open 7 days a week, so book your tee time now. The Golf Club at La Quinta – where champions play.

## GOLF CLUB DINING

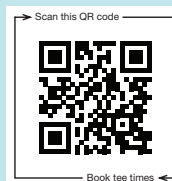
Bistro 60 is the signature restaurant at The Golf Club at La Quinta, serving La Quinta and the greater Coachella Valley. Bistro 60 offers a relaxed setting where one can enjoy breakfast, lunch, happy hour menu and dinner, daily. Our breakfast menu is a crowd-pleasing favorite with golfers and locals. Replenish yourself after 18 holes of golf with a satisfying lunch or delicious appetizers. Bistro 60 features nightly entertainment and is also available for small or large catering events. Bistro 60 is for everyone! Reservations are recommended – **760-501-0620**. Visit us at: **bistrosixty.com**

## DRIVING DIRECTIONS

From Interstate 10, take the Jefferson St. exit. Continue south on Jefferson St. approximately 11 miles to Avenue 54. Turn left onto Avenue 54 and drive 1.5 miles to Madison St. Turn right on Madison St. and proceed south to Avenue 60. Turn left onto Avenue 60 and go .5 miles to the entrance of Trilogy La Quinta. The clubhouse is on the right.

## TEE TIMES

Open 7 days a week. Tee times may be reserved 7 days in advance by calling the pro shop at **(760) 771-0707** or online at **golfclubatlaquinta.com**.







(800) 701-1656

Cimarrón Golf Resort, where excellent playing conditions and a breathtaking setting always guarantee a fun and friendly golf experience for every level of golfer. Whether playing a round of golf on one of our two spectacular golf courses, the Boulder Course or the Pebble Course, Cimarrón Golf Resort is a place where lasting memories are made.

## DRIVING DIRECTIONS

Cimarrón Golf Resort is located just minutes from I-10 in Cathedral City. Take the Date Palm exit south from I-10 and turn right on 30th Avenue. Continue heading west past Landau Blvd., and straight ahead to the Resort entrance.

From downtown Palm Springs, take Ramon Road east past the airport, and turn left on Landau Blvd. Then turn left on 30th Avenue and continue heading straight ahead to the Resort entrance.

## GOLF COURSES

Cimarrón Golf Resort features two of the most distinctive layouts in the Coachella Valley. The Boulder Course is a 6,782-yard links style golf course with four sets of tees & breathtaking views. The Pebble Course is a fun filled 3,020-yard executive golf course with three sets of tees and 17 chances for a hole-in-one.

## FACILITIES

Cimarrón Golf Resort offers a full-service restaurant which can host a wide variety of special events, large outdoor seating area with beautiful views of the Santa Rosa & San Jacinto Mountain Ranges, fully-stocked golf shop & the friendliest staff in the Coachella Valley.

## GREEN FEES (See Green Fees Legend on Map Page 2)

### Boulder Course

High Season . . . . . \$\$  
Shoulder Season . . . . \$  
Value Season. . . . . \$

### Pebble Course

High Season . . . . . \$  
Shoulder Season . . . . \$  
Value Season. . . . . \$

## TEE TIMES

Reservations may be made up to 30 days in advance by calling the club at (800) 701-1656 or [cimarrongolf.com](http://cimarrongolf.com).







# Desert Willow Golf Resort

(760) 346-7060

Desert Willow Golf Resort offers 36 holes of championship golf and prides itself on maintaining service levels typically associated with exclusive private clubs. The golf experience is true desert golf, visual beauty, and a reverence for nature and our precious resources.

## DRIVING DIRECTIONS

From Interstate 10 - Cook Street off ramp:

1. Exit Cook Street proceed south.
2. Turn right onto Country Club Drive.
3. Turn right onto Desert Willow Drive.
4. The Clubhouse is at the end of Desert Willow Drive on the right.

## GOLF COURSES

Desert Willow Golf Resort features two **world-class championship golf courses, Firecliff and Mountain View**. Players can test their skills against Firecliff's natural hazards and myriad water features, or play a smoother, more relaxed round on the magnificent Mountain View course. Awards: *Golf Digest* - rated 4.0 and 4.5 stars, respectively, on Public Places to Play list; *Golf Week* - Firecliff rated #27, Top 50 Best Municipal Courses; *Desert Golf Magazine* - Firecliff rated #1, Mountain View #5, Best Public Access Courses; *Southland Golf* - rated #1 Best Golf Course and Best Value.

## FACILITIES

The Clubhouse features a full-service restaurant and bar that are open for breakfast and lunch with expanded outdoor dining on the Lakeview Terrace. Banquet facilities can accommodate up to 400. The practice facility includes a driving range, putting, and chipping greens.

## GREEN FEES / TEE TIMES

Prices range from \$65 - \$185, based on season. Green fees include range balls and GPS-equipped golf carts. Tee times up to 60 days in advance.

## PLATINUM CLUB CARD

For extended stays, save green and buy the Platinum Club Card, [desertwillow.com/Platinum](http://desertwillow.com/Platinum).

## GROUP OUTINGS / GOLF ACADEMY

For groups of 16 or more call the Director of Sales at (760) 346-7060.

For the Palm Desert Golf Academy call (760) 340-4057.







(760) 365-0033

Hawk's Landing Golf Club at Blue Skies is located in the hi-desert community of Yucca Valley. Just 30 minutes from Palm Springs, this 12-hole golf club is a true oasis in the desert. Created to blend with the beautiful natural surroundings, the unique design displays the striking contrast of desertscape next to rolling greens with classic artistry. Come up to the beautiful hi-desert, where daytime temperatures are typically 10-15 degrees cooler than the low desert, for a new and exciting experience in golf!

### DRIVING DIRECTIONS

**From West:** Take I-10 east to CA-62 exit 117 toward Yucca Valley/29 Palms. Continue on Hwy 62 for approximately 18 miles to Camino Del Cielo Trail. Turn left and proceed 1/2 block to Martinez Trail. Turn right and proceed 1 block to the golf course entrance on left.

**From East:** Take I-10 west to CA-62 exit 117 toward Yucca Valley / 29 Palms. Continue on Hwy 62 for approximately 18 miles to Camino Del Cielo Trail. Turn left and proceed 1/2 block to Martinez Trail. Turn right and proceed 1 block to the golf course entrance on left.

### GOLF COURSE

Designed with two 6-hole loops, you can choose to play 6 holes on a lunch break or 12 holes when you have a bit more time. Add another 6-hole loop to complete a full 18 holes. However you design your day of golf, you will find this course both challenging and rewarding. Hawk's Landing's design incorporates a mix of par fours, fun par threes, along with some challenging and long par fives. The challenging bent grass greens are superior to those of any course in either the upper or lower deserts.

### FACILITIES

Hawk's Landing Golf Club is a new (April '15) public facility with amenities that include a brand new clubhouse with full service pro shop, state-of-the-art covered driving range, practice chipping area & putting green, and new electric cart fleet. The Roost Café serves breakfast and lunch Sun.-Wed. and breakfast, lunch and dinner Thurs.-Sat. with both indoor and outdoor patio seating and a full bar. Watch your favorite sporting events on our three big screen high-definition TV's. A perfect venue for private parties, wedding receptions, business meetings, and golf tournaments.

### GREEN FEES (See Green Fees Legend on Map Page 2)

All Year . . . . . **\$40 or under**

### TEE TIMES

Reservations can be made by calling the Pro Shop at **(760) 365-0033** or visit us online at **hawkslandinggolf.com**.







**(760) 200-2200**

Mountain Vista Golf Club, located behind the gates of beautiful Sun City Palm Desert Community Association, is home to two golf courses. Either course will guarantee an enjoyable round, friendly service, and all at a reasonable price. The Santa Rosa and San Gorgonio courses are always extremely well maintained, play to a reasonable yardage and provide a challenge to all levels. They are situated in between the Santa Rosa and San Gorgonio mountain ranges and at every turn provide breathtaking views.

### DRIVING DIRECTIONS

**From Palm Springs Airport** (15 minutes): Turn left onto El Cielo Road, turn left at Ramon Road and travel 6 miles. Merge onto I-10 East and continue for 4.3 miles to the Washington Street exit and turn left. Turn right on Del Webb Boulevard and continue through the gate to the clubhouse.

**From I-10:** Take Exit 137 to Washington Street and turn left. Turn right on Del Webb Boulevard and continue through the gate to the clubhouse.

### GOLF COURSES

The Santa Rosa and San Gorgonio courses are always extremely well maintained, have a variety of yardage options and provide a challenge to all levels. The Santa Rosa course is the more traditional layout with two par 3's and two par 5's on each side. The San Gorgonio course provides a unique challenge with a front nine that hosts four par 3's and then a difficult test on the back nine with only one par 3. Both courses play to a yardage of about 6,700 yards from the tips, but can also play as short as 5,200 yards for the new golfer.

### FACILITIES

Mountain Vista Golf Club offers two golf shops that are fully equipped, one driving range (located at the Santa Rosa course), and a knowledgeable staff. As one of the few facilities in the Coachella Valley that can boast 4 Class A PGA professionals on staff, we can host any event, do group clinics and individual lessons. Contact John McLaughlin, PGA Head Professional, for more information at (760) 200-2250.

### GREEN FEES (Both Courses)

High Season . . . . .	<b>\$88</b>
Shoulder Season . . . . .	<b>\$58</b>
Value Season. . . . .	<b>\$35</b>

### TEE TIMES

Reservations may be made 6 days in advance by calling **(760) 200-2200** or on the web at **mountainvistagolfclub.com**.







**(760) 328-1005**

Tahquitz Creek Golf Resort is the pride of the City of Palm Springs and is located just minutes away from Downtown Palm Springs. The facility has two uniquely different courses, a full-service restaurant, and amenities.

### DRIVING DIRECTIONS

**From Highway 111** turn north on Golf Club Drive. Tahquitz is on the left side, 3/4 of a mile from Highway 111.

**From Interstate 10** coming east from Los Angeles, exit Gene Autry Trail and turn right. Then go 5 miles, turn left on Dinah Shore, then right on Crossley.

Coming west from Indio, exit Bob Hope, turn left towards Agua Caliente Casino and then turn right on Ramon, go 6 miles, then turn left on Crossley. Tahquitz is on the right past Dinah Shore.

### GOLF COURSES

The Legend Course (originally the Palm Springs Municipal) was designed by William Bell in the late 50s, and it offers a traditional layout with tree-lined fairways and undulating greens. The Resort Course was designed by famed designer Ted Robinson in 1995. This 6,700-yard desert layout features rolling terrain, desert landscaping, and waterscapes galore, a true desert golf experience.

### FACILITIES

Tahquitz Creek Golf Resort is open to the public year-round. 90-days advance booking reservations are available. Arnold Palmer Golf Management has a staff of trained professionals onsite to help make your experience truly unforgettable. We also host tournaments, corporate outings and meetings, weddings and private parties.

### GREEN FEES (See Green Fees Legend on Map Page 2)

High Season . . . . .	\$\$\$
Shoulder Season . . . . .	\$\$
Value Season. . . . .	\$

*All green fees include golf cart.*

### TEE TIMES

Tee times may be made up to 90 days in advance by calling the club at **(760) 328-1005** or online at **[tahquitzgolfresort.com](http://tahquitzgolfresort.com)**.







# THE WESTIN

## MISSION HILLS

### GOLF RESORT & SPA



**(760) 328-3198**

Set on 360 acres just outside of Palm Springs, The Westin Mission Hills Golf Resort & Spa offers a relaxing oasis for your next golf outing. Select from our Pete Dye or Gary Player-designed courses with spectacular panoramas of the desert landscape. *Golf Magazine* has consistently ranked the club among the Top 75 Destinations for Golf and Resort Accommodations in the U.S. Enjoy a full clubhouse, practice areas, golf shop and professional instruction. And when you're done playing, relax and rejuvenate with the resort's exceptional restaurants, full-service spa and luxurious guest rooms.

### DRIVING DIRECTIONS

**From East:** Take I-10 West to the Bob Hope Drive Exit. Turn left off exit to Bob Hope Drive. At Dinah Shore Drive turn right. The resort's entrance is on the left-hand side at the first light.

**From West:** Take I-10 East to the Bob Hope Drive Exit. Turn right off exit Bob Hope Drive. At Dinah Shore Drive turn right. The resort's entrance is on the left-hand side at the first light.

### GOLF COURSES

The Westin Mission Hills Golf Resort & Spa proudly offers two championship courses. The Gary Player Signature Course is a 7,062-yard, par-72 course renowned for its careful integration with the desert landscape. You'll enjoy the area's finest greens linked by rolling fairways, as well as many spectacular water features. With hidden pins, pot bunkers, railroad ties and elevated tees, the Pete Dye Resort Course offers a challenge for golfers of all skill levels. It's a 6,706-yard, par-70 course with majestic mountain views you won't soon forget.

### FACILITIES

Practice before your round on the driving range and relax afterward with a wide range of resort amenities onsite. The Pete Dye Resort and Gary Player Golf Shops have recently been named Top 100 Best Golf Shops by *GolfWorld Magazine*. Both have an excellent selection of brands such as Under Armour, Greg Norman, Peter Millar, and Travis Mathews.

### GREEN FEES

Fees vary by season and include unlimited practice balls and cart rental. Book directly for a Best Rate Guarantee.

### TEE TIMES

Log on to **playmissionhills.com** for reservations or call **(760) 328-3198**.





# Golf is good.



*But it's even better when you*  
**pay under par.**

---

Save up to 60% on green fees at

**underpar.com**  
*green fees for less*